

# Axial & Centrifugal FANS & BLOWERS



Cabin and cockpit air handling is essential to the comfort and safety of passengers and crew. PDS is the leader in aircraft ventilation and offers a full line of Axial and Centrifugal Fan and Blower designs that encompass a large range of flow rates and pressures for Business, Commercial and Military applications on both fixed wing and helicopter aircraft.

Our trusted Fans and Blowers are engineered to withstand the extreme environments required during flight and are RTCA / DO160 certified.

- Cabin / Cockpit Heating
- Cabin / Cockpit Cooling
- Recirculation
- Electronics Cooling
- Evaporator and Condenser fans

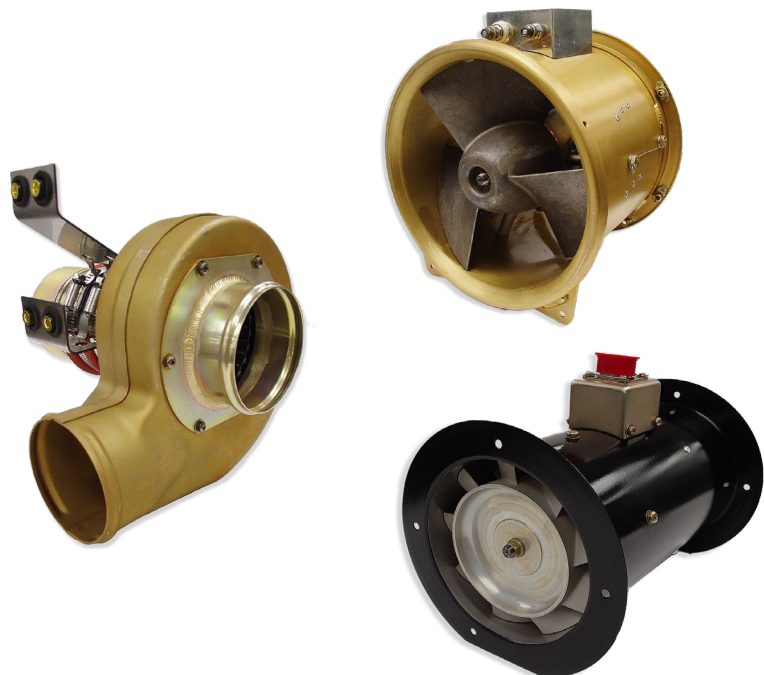
## Features & Benefits:

### Axial

- Brushed or brushless motors
- Flow: 150 - 1,600 CFM
- Voltage rating of 18 - 32 VDC
- Maximum current of 6.1 - 60 Amps
- Heating capability
- Includes EMI filtering and brushless control

### Centrifugal

- Brushed or brushless motors
- Flow: 60 - 500 CFM
- Voltage rating of 18 - 32 VDC
- Maximum current of 5.5 - 40 Amps
- Speed control options
- Includes EMI filtering and brushless control



# Axial & Centrifugal FANS & BLOWERS

Part Number	Blower Type	Output (SCFM)	Pressure (IN H2O)	Range (VDC)	Current (amps)
AI-BA128A-*	vane axial	1500	3.50	20 - 30	60.0
AI-BA128G-1	vane axial	1600	2.00	20 - 30	52.0
BA57A-1	vane axial	150	4.00	18 - 32	6.1
BA73A-2	vane axial	194	2.60	15 - 30	12.5
BA76A-2	vane axial	300	6.00	18 - 32	23.0
BA96A-1	vane axial	650	1.50	18 - 30	20.0
BA112A-1	vane axial	825	0.94	18 - 30	25.0
BA112B-2	vane axial	1050	1.00	18 - 30	27.0
BA112B-3	vane axial	950	1.00	18 - 30	19.0
BA112B-4	vane axial	1200	1.00	20 - 30	40.0
BA112C-1	vane axial	800	2.60	20 - 30	30.0
BA112D-1	vane axial	950	2.00	20 - 30	27.5
BA112F-1	vane axial	950	1.00	18 - 30	19.0
BA128A-*	vane axial	1500	3.50	20 - 30	60.0
BA128C-*	vane axial	1400	3.50	20 - 30	60.0
BA128E-5	vane axial	1200	4.00	18 - 30	60.0
BA128E-7	vane axial	1600	3.00	18 - 30	60.0
BA128G-1	vane axial	1600	2.00	20 - 30	52.0
BA176-1	vane axial	1000	1.00	20 - 30	20.0
BC60A-1	centrifugal	155	7.20	18 - 32	18.0
BC60A-2	centrifugal	150	7.20	18 - 32	18.0
BC60B-1	centrifugal	60	4.50	18 - 32	8.0
BC61B-1	centrifugal	100	4.00	18 - 32	10.0
BC64A-2	centrifugal	100	2.50	18 - 32.5	5.5
BC80A-9	centrifugal	370	4.00	20 - 30	21.5
BC80B-*	centrifugal	350	4.00	20 - 30	25.0
BC80C-*	centrifugal	350	4.00	20 - 30	20.0
BC80G-5	centrifugal	480	2.70	20 - 30	29.0
BC80H-*	centrifugal	350	4.00	18 - 30	20.0
BC89A-*	centrifugal	500	4.00	20 - 30	25.0
BC89D-2	centrifugal	500	4.00	20 - 30	30.0
BC112A-*	centrifugal	200	20.00	18 - 30	40.0

\*Additional part numbers available with slightly different specs for connector type, length, etc.